

THOMSON REUTERS
ELITE™

**AMP UP YOUR
EFFICIENCY TO
THE NEXT LEVEL**



THOMSON REUTERS™

**FINALLY, A SINGLE
USER INTERFACE**

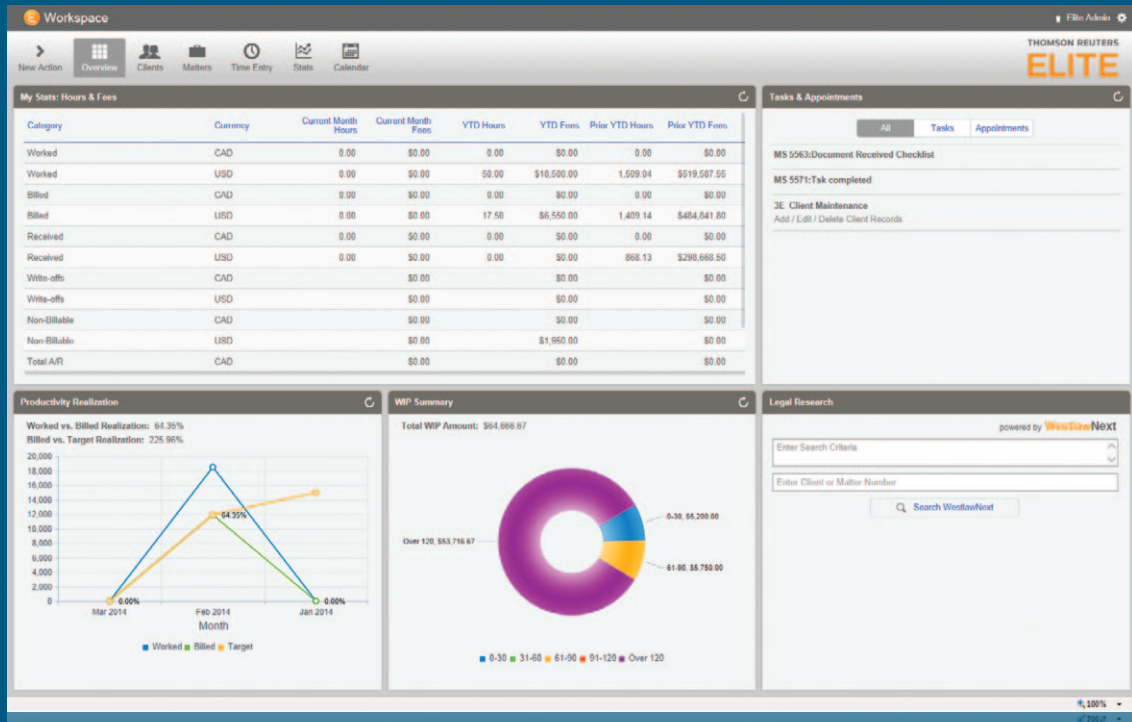
UNLOCK THE FULL POWER OF A COMPLETE ENTERPRISE BUSINESS MANAGEMENT SOLUTION

Law firms typically juggle more than 10 different business systems to handle their daily activities. Lawyers have to log in and out of multiple systems to get their jobs done. IT staff are bogged down with creating costly integrations. To help ease the pain, Thomson Reuters Elite has developed Workspace and the Elite Integration Framework (EIF). Workspace is a single, user-friendly interface powered by the new EIF technology that combines the information and functionality that lawyers rely on every day. Workspace provides information and workflow capabilities, from time and revenue to matter management, in a single view. It's built to work the way you work from your desktop or a mobile device, when and where you need it. Say good-bye to rising costs, integration hassles, and disparate systems. Say hello to Workspace.

WORKSPACE FROM THOMSON REUTERS ELITE

Workspace is a powerful, intuitive user interface for business management. It is made possible by the new Elite Integration Framework that delivers a common technology platform for all key business systems. Now, CIOs can reduce costly point integrations between systems, and lawyers can access all key business management functionality and information from one location.

WORKSPACE HOME VIEW



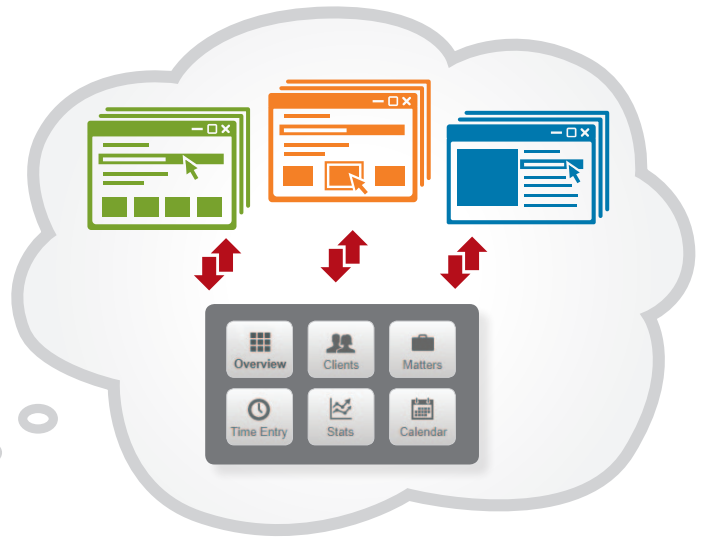
Increase Efficiency –

A ONE-STOP SHOP FOR LAWYERS

THE PROBLEM

On average, a firm uses 10 different systems, all of which don't talk to each other and need to be launched individually.

I spend way too much of my time switching from system to system. I want to simplify business management so I can get back to practicing law.



THE SOLUTION

- Deliver the full range of business management features lawyers need in one view
- Perform actions and research, and launch needed programs from a single interface
- Bring together financial and matter information for a complete view of the client

Improve Flexibility –

**A SOLUTION THAT
WORKS THE WAY
YOU WORK**

THE PROBLEM

I want access to data and tasks when I need it, regardless of where I am.



1 Smartphone usage by lawyers has increased **28%** since 2011*

2 Tablet usage has increased **220%** since 2011*

3 Lost billable hours are on the rise



THE SOLUTION

- Streamline workflow at your desktop by having the full range of business management features in one view
- Work the way you need to work, with instant access to key performance indicators and other information from your mobile device
- Walk into meetings prepared with up-to-the minute insights
- Prevent lost billable hours while out of the office with the ability to enter time on the go

*Combined data taken from 2012 and 2013 ABA Technology Survey Reports

Real-time Client Information –

A BOOST IN CLIENT SATISFACTION

THE PROBLEM

- Compiling a complete history of clients takes a lot of time
- Information is out-of-date
- Clients complain about not being kept up to speed on billing and project status
- Limited access to reporting and matter information

I want to know all the current information about my clients before I meet with them.



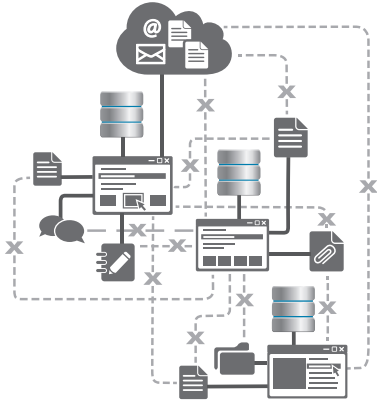
THE SOLUTION

- Access real-time client information from the front and back office in a single view
- Improve profitability and manage clients more effectively by making data-driven decisions
- Scan key performance indicators easily
- View client and matter management information such as documents, entities, team information, and financials

Reduce Complexity and Costs –

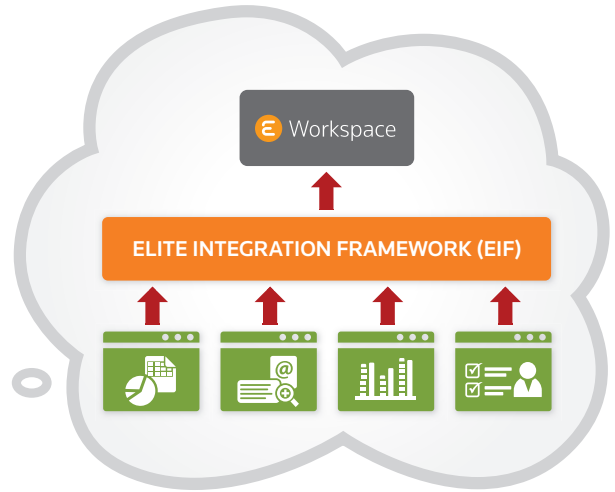
A COMMON TECHNOLOGY PLATFORM

THE PROBLEM



We are spending too much money on integration every time our firm purchases a new solution.

- The number of essential systems a law firm uses has tripled since 2001
- Point-to-point integrations are costly
- We have all these systems that don't talk to each other
- Extensive services are needed to connect new systems into our existing technology platforms



THE SOLUTION

- Dramatically reduce the number of service hours needed to add new business systems thanks to a common technology platform—the Elite Integration Framework (EIF)
- Efficiently conduct ongoing data management activities with help from the EIF, which unifies client and matter data from different operational systems

**FINALLY,
A NEW WAY
TO WORK**

MANAGE YOUR BUSINESS WITH EASE

Workspace provides you a new way to combine the information and functionality you rely on to accomplish your everyday activities. You get the flexibility you need to access key insights and perform tasks from your desktop or a mobile device when and where you need to.

Powered by the Elite Integration Framework, Workspace is designed to deliver the complete Enterprise Business Management Solution (EBMS) offered by Elite in a single, user-friendly interface. The initial release of Workspace in 2014 brings together Elite's core Financial Management and Matter Management offerings, and Workspace will expand going forward to include all components of Elite's EBMS.

To learn more about Workspace from Thomson Reuters Elite, visit elite.com/workspace.

